



14 Shoalhaven Road Sylvania Waters NSW

3 1 3

Offered for the first time in sixty years, is this lovingly maintained family home, sitting on a generous wide block located in the heart of Sylvania Waters. Perfectly proportioned, this deceased estate offers three good sized bedrooms all with built-ins, a combined lounge dining and an updated kitchen. The family bathroom includes a separate bath and shower and is in excellent original condition. Upstairs is a large second living area, great to use as an office or teenage retreat with future potential for conversion into an additional two bedrooms. Off the kitchen is an undercover entertaining area with level, grassy lawn and side access. The single LUG offers additional storage options whilst the double under cover carport provides covered off street parking. With endless potential, for those with a vision, including knock down and

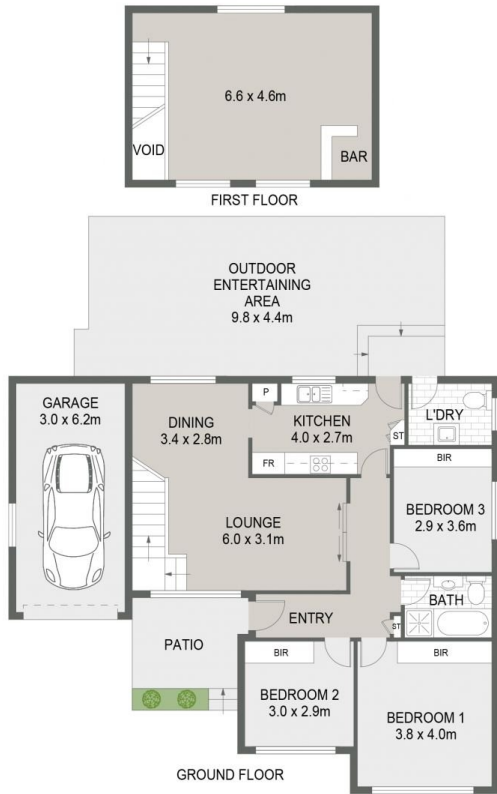
Type : House
Price : \$1,800,000-\$1,900,000
Land Size : 594.4 sqm
View : <https://www.greigproperty.com/sale/nsw/sutherland/sylvania-waters/residential/house/8149268>



David Greig
0414666559

[For full version visit the website](https://www.greigproperty.com)

14 Shoalhaven Road, Sylvania Waters



All information contained in this document is from sources we believe to be accurate, however we cannot guarantee its accuracy. Interested persons should make and rely on their own enquiries in relation to measurements, dimensions, layout, furniture and descriptions.