



### 301 Princes Highway Sylvania NSW

4 2 2

Set back from the highway with access from a safe slip road, this modern family home offers an abundance of options for living and entertaining. The upper level of this lovely home is well proportioned with its airy open plan living, modern kitchen, three good sized bedrooms and huge family bathroom. But what makes this space fabulous is the enviable entertainer's balcony providing gorgeous water views and west facing sun sets for year-round entertaining. Downstairs you will find an additional air conditioned fourth bedroom, second renovated bathroom and huge tiled rumpus leading onto a sunny level lawn and spa pool. The storage in this home is exceptional as the backyard houses an additional garage to keep everything out of sight and picture perfect. Offering so much more than meets the eye, this excellent family home

**Type** : House  
**Price** : Contact Agent  
**Land Size** : 562.7 sqm  
**View** : <https://www.greigproperty.com/sale/nsw/sutherland/sylvania/residential/house/8120625>



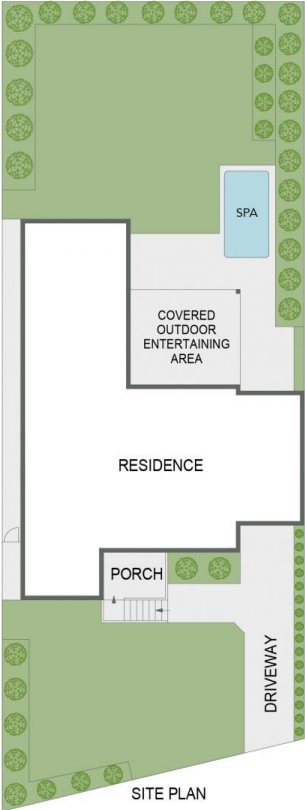
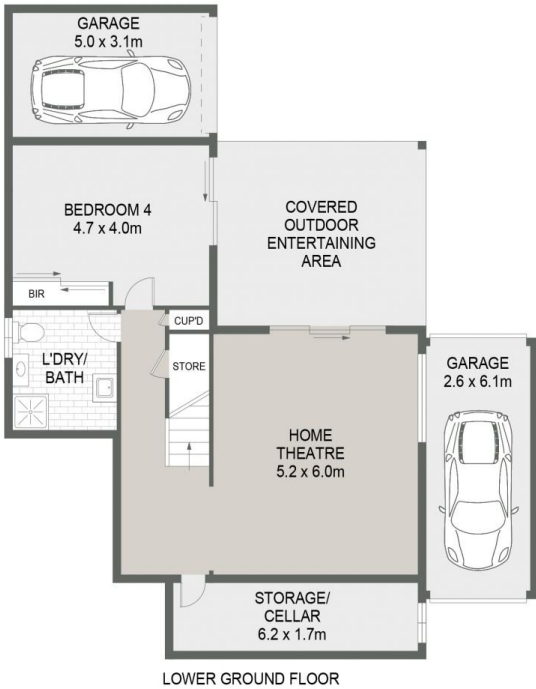
**David Greig**  
0414666559



**Aaron Dunn**  
0414666559

[For full version visit the website](https://www.greigproperty.com)

301 Princes Highway, Sylvania



**Greig**  
Property Agents



All information contained in this document is from sources we believe to be accurate, however we cannot guarantee its accuracy. Interested persons should make and rely on their own enquiries in relation to measurements, dimensions, layout, furniture and descriptions.