



30A Charles Place Jannali NSW

3 2 1

Nestled in Jannali, in a quiet leafy location this original three-bedroom, two bathroom home on a 695.6m² level north facing rear garden block is your chance to secure a foothold in the Sutherland Shire. With some elbow grease this house could be renovated back to its yesteryear charm or knocked down and rebuilt as the home of your dreams. Just a five minute walk to the train station and all that Jannali Village offers, if you use your imagination this could be the one you've been looking for.

- Three bedroom and two bathrooms
- Separate garage
- Level North facing rear garden
- Eight minute walk to Jannali train station
- Five minute drive to Kareela Village Shopping Centre

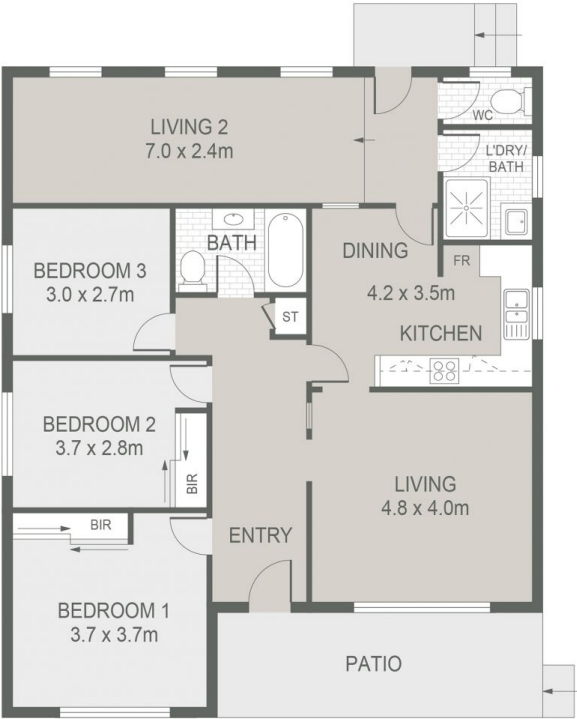
Price : \$ 1,725,000
Land Size : 695.6 sqm
View : <https://www.greigproperty.com/sale/nsw/sutherlandland/jannali/residential/house/7971657>



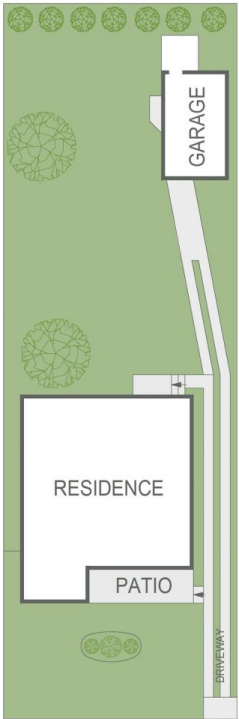
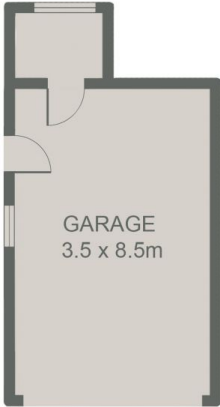
David Greig
0414666559



Aaron Dunn
0414666559



FLOOR PLAN



SITE PLAN

