



1/79 Princes Highway Sylvania NSW

3 1 2

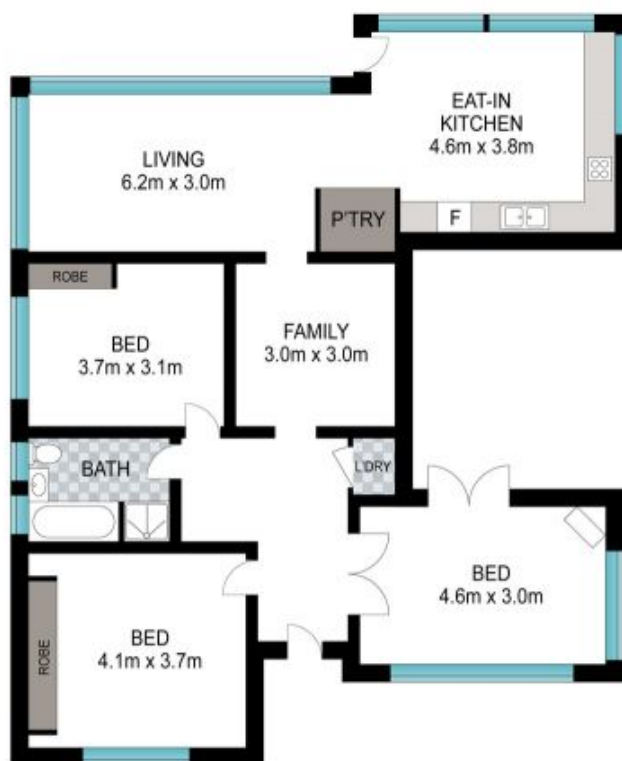
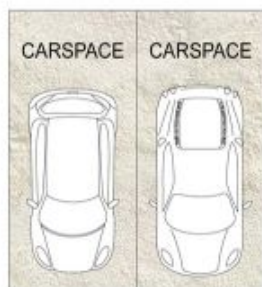
With its sparkling north facing water views over the Georges River, this is a good opportunity to secure a great family home. This three-bedroom home offers a modern eat-in kitchen, open plan living, well maintained bathroom, additional TV room plus off-street parking for two cars. The terraced backyard offers a lovely place to garden or relax in the sun. Short walk to transport and Sylvania Public school makes this location very convenient.

- Three bedrooms with fans, two with built-ins, one with air-conditioning
- Large, tiled open plan kitchen, with combined lounge/dining enjoying lovely water views.
- Clean and tidy family bathroom
- Large, sunny terraced backyard
- Off street parking for two cars

View : <https://www.greigproperty.com/lease/nsw/sutherland/sylvania/residential/house/7930304>



Jodie Greig
0414666559



INT: 103 m²

Scale in metres. Indicative only. Dimensions are approximate. All information contained herein is gathered from sources we believe to be reliable. However, we cannot guarantee its accuracy and interested persons should rely on their own enquiries.

1/79 Princes Highway, Sylvania