

31/7 Murrallin Lane Sylvania NSW

3 2 3

With a focus on easy and convenient living, this stunning apartment has been classically designed to take full advantage of its blue chip position with uninterrupted water and city skyline views across a sun soaked northerly aspect. Ideal for entertaining on every scale, the stunning covered outdoor area provides the perfect setting for casual alfresco dining with family & friends.

- Oversized master bedroom includes walk-in-robe, ensuite & fantastic water views
- All other double bedrooms are complete with built-in wardrobes
- Sweeping open plan living spaces with full access onto the amazing terrace
- Oversized chef's kitchen with dishwasher, high gloss cabinets & quality stainless steel appliances
- Extra large triple garaging with auto entry

Building Size : 208 sqm
View : <https://www.greigproperty.com/lease/nsw/sutherland/sylvania/residential/apartment/7822292>

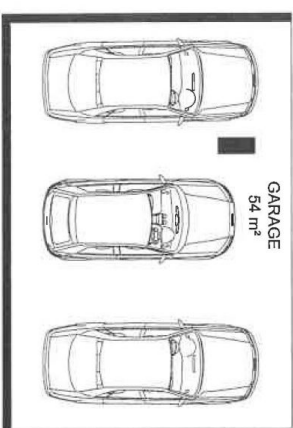


Jodie Greig
0414666559

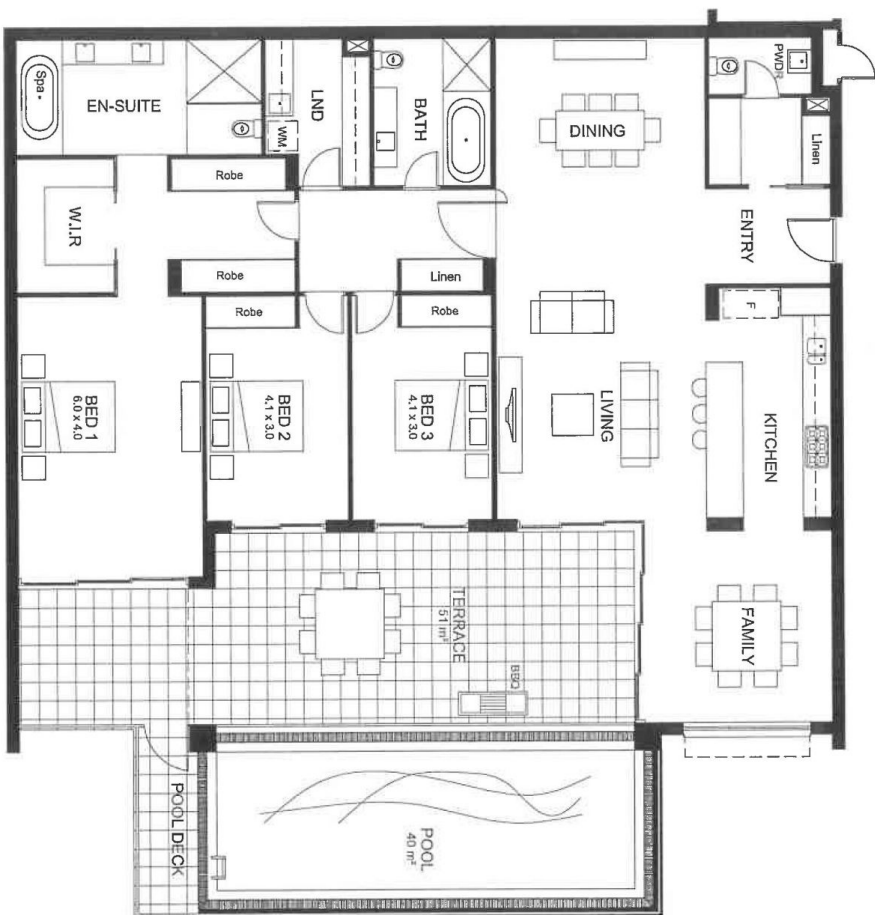
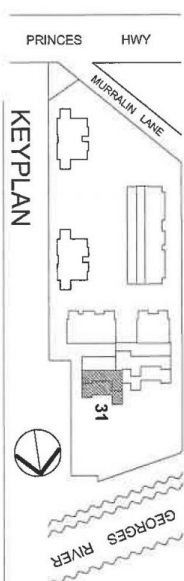
WATERFRONT RESIDENCE 31

Internal Area : 208m²
 External Area : 51m²
 Private Pool : 40m²
 Car spaces : 3

0 1 5m 1:100



BASEMENT LEVEL PLAN



FIRST LEVEL PLAN