

**9/7 Melrose Avenue Sylvania NSW**

3 2 1

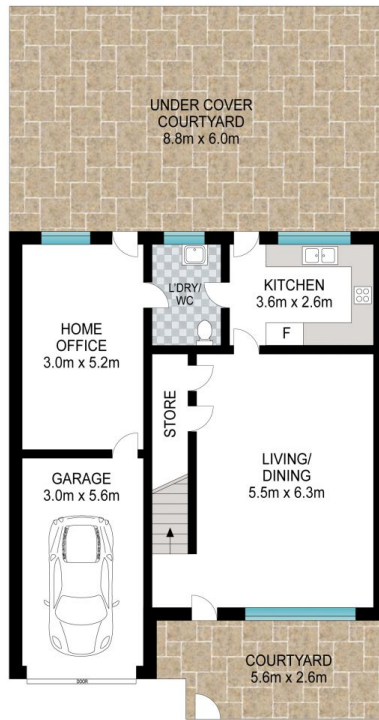
A sunny rear north aspect and refreshed interiors combine for readymade low maintenance living in this inviting double level townhouse. It is privately tucked away in a well maintained complex of 10, within a short stroll of Southgate Shopping Centre.

- Easycare layout features open living and dining room
- North facing backyard with covered entertaining area
- Well presented modern kitchen, with stainless steel appliances
- Three spacious bedrooms, all include built-in wardrobes
- Master bedroom with airconditioning and ensuite
- Main bathroom complete with separate toilet
- Air conditioned living with internal laundry
- Internal access to the single lock-up garage, visitor parking
- Additional sunny front courtyard and second living space

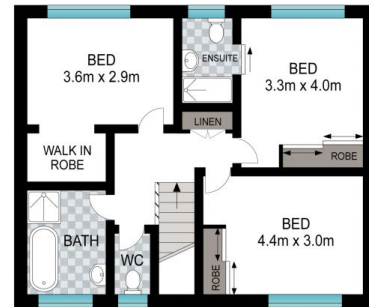
**View** : <https://www.greigproperty.com/lease/nsw/sutherland/sylvania/residential/townhouse/7506164>



**Jodie Greig**  
0414666559



**GROUND FLOOR**



**FIRST FLOOR**



INT: 160 m<sup>2</sup>  
EXT: 68 m<sup>2</sup>

Scale in metres. Indicative only. Dimensions are approximate. All information contained herein is gathered from sources we believe to be reliable. However, we cannot guarantee its accuracy and interested persons should rely on their own enquiries.

9/7 Melrose Avenue, Sylvania