



10 Onslow Place Sylvania NSW

4 2 2

Designed for contemporary family living and easy outdoor entertaining, this impeccable home is beautifully presented throughout two light filled levels. It's tucked away in a peaceful cul-de-sac, with Box Road Village shops and cafés just a short walk away.

- Glass-framed modern interiors with stylish timber floors
- Swimming pool set amid hedge-lined gardens and sunny lawns
- Kitchen features a stone island bar and quality appliances
- Spacious home office plus four bedrooms with built-in robes
- Two sleek bathrooms plus powder room, main bathroom with bath
- Grand master with walk-in, chic ensuite and two balconies

[For full version visit the website](https://www.greigproperty.com)

Type : House
Price : \$ 2,100,000
Land Size : 556.4 sqm
View : <https://www.greigproperty.com/sale/nsw/sutherland/sylvania/residential/house/7378590>

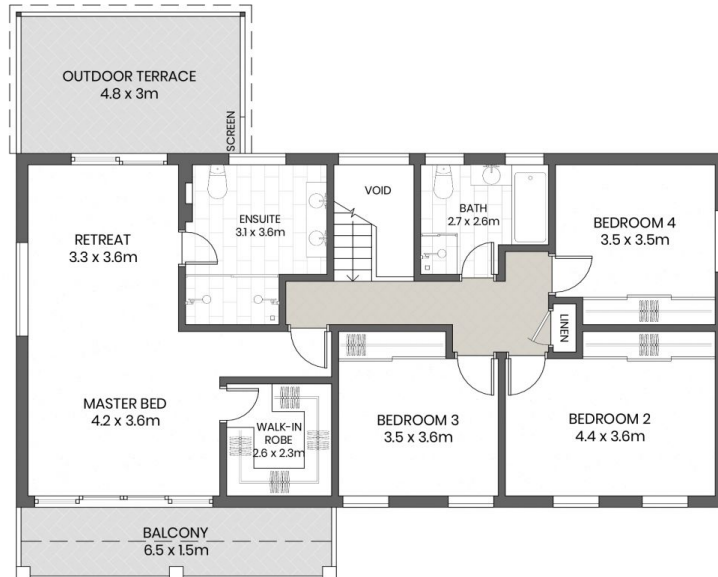


David Greig
0414666559

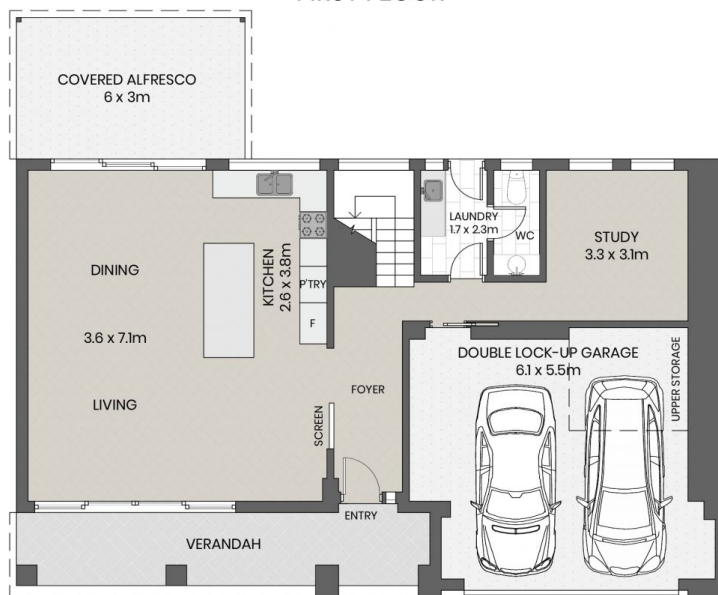


10 Onslow Place, Sylvania

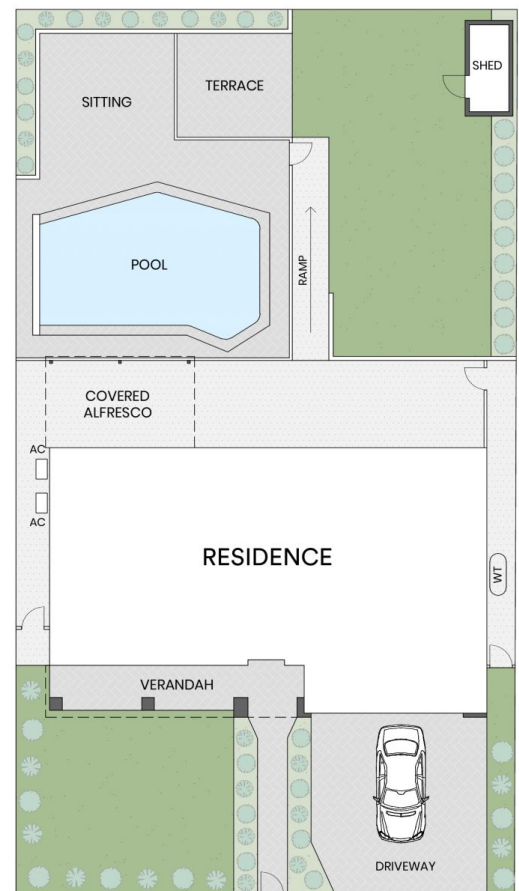
0 1 2 3 4
1:100
Internal 227M²
External 449M²
Land 556M²



FIRST FLOOR



GROUND FLOOR



ONSLow PLACE