



12 Roper Crescent Sylvania Waters NSW

3 2 2

Single level, three bedroom home with excellent deep water mooring facilities.

All bedrooms are carpeted and the home has ducted reverse cycle air conditioning throughout. The rear of the home has an inground pool and outdoor entertaining area.

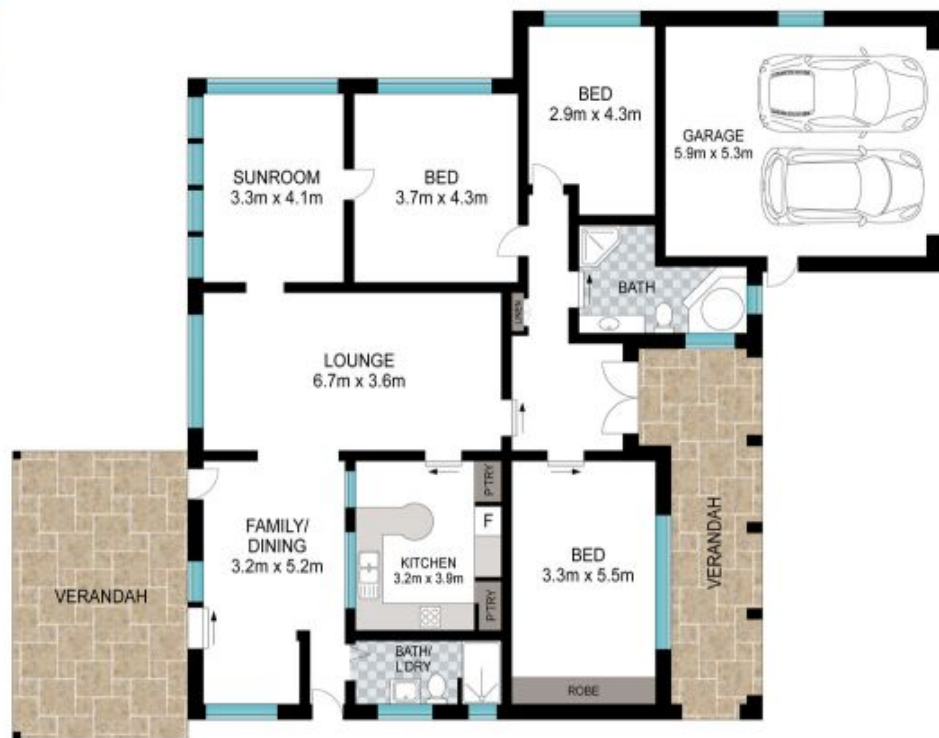
- * Enclosed front courtyard
- * Ducted reverse cycle air conditioning
- * 2 separate living areas
- * 2 car garage
- * Pontoon & deep water mooring facilities
- * Sparkling inground pool
- * Sought after location

Type : House

View : <https://www.greigproperty.com/lease/nsw/sutherland/sylvania-waters/residential/house/7368422>



Jodie Greig
0414666559



Scale in metres. Indicative only. Dimensions are approximate. All information contained herein is gathered from sources we believe to be reliable. However, we cannot guarantee its accuracy and interested persons should rely on their own enquiries.

12 Roper Crescent, Sylvania Waters