



3 Tuross Avenue Sylvania Waters NSW

6 3 2

Pairing premier water frontage with an abundance of northerly sunshine, this tightly-held home offers incredible space and versatility for young or growing families. It's perfectly placed within a stroll of the local shopping village and Hawkesbury Park.

- Bright lounge and dining spaces open out to sunlit backyard
- Upper level provides separate second living area/home office
- Salt water pool and covered terrace for meals or entertaining
- Generous fenced lawn area with gate to private jetty pontoon
- Black stone kitchen includes a stainless oven and DishDrawer
- Four ground floor bedrooms, one features walk-in and

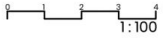
Price : \$ 3,500,000
Land Size : 676.6 sqm
View : <https://www.greigproperty.com/sale/nsw/sutherlandland/sylvania-waters/residential/house/7366669>



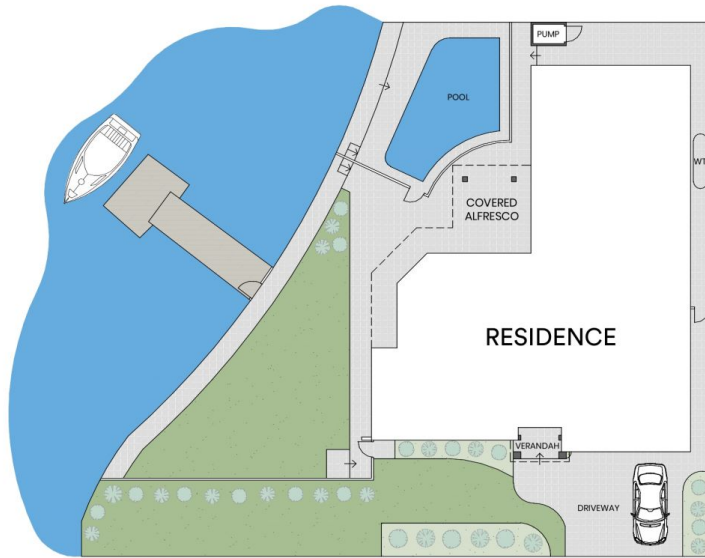
David Greig
0414666559



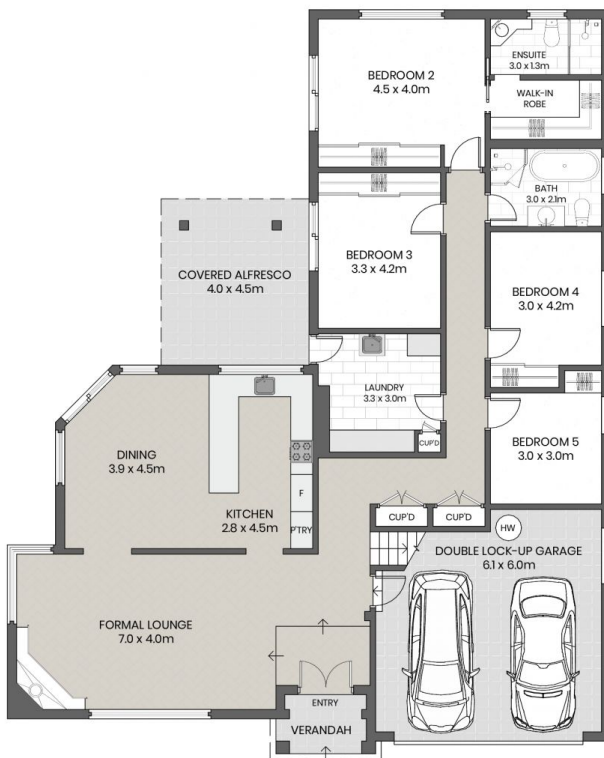
3 Tuross Avenue, Sylvania Waters



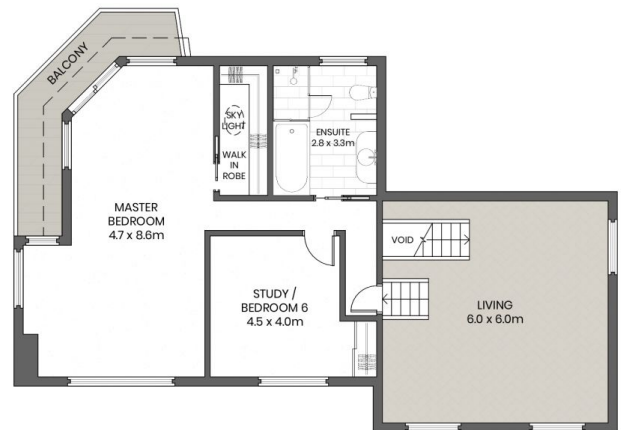
Internal 321M²
Land 676M²



TUROSS AVENUE



GROUND FLOOR



FIRST FLOOR

Greig
Property Agents

All information contained in this document is from sources we believe to be accurate, however we cannot guarantee its accuracy. Interested persons should make and rely on their own enquiries in relation to measurements, dimensions, layout, furniture and descriptions.