



69 Tara Street Sylvania NSW

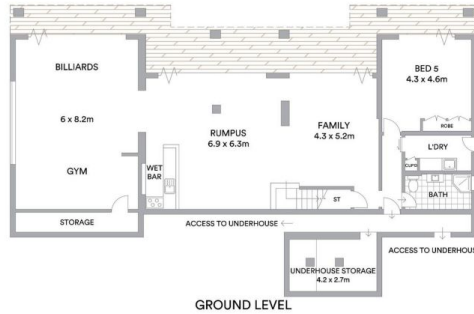
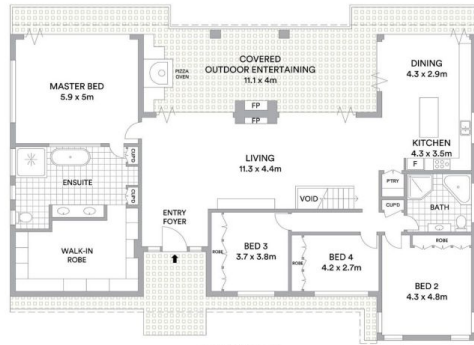
A sublime showpiece of inspired design, flawless craftsmanship and grand scale entertaining, this custom-appointed home fuses premium quality with contemporary style over two luxury levels. It bathes in a prized north aspect, delivers exceptional privacy and embraces picturesque views across the Georges River.

5 3 12

Type : House
Land Size : 1351 sqm
View : <https://www.greigproperty.com/sale/nsw/sutherland/sylvania/residential/house/7333685>



David Greig
0414666559



Internal 386sqm
External 1,163sqm
Land area 1,351sqm

McGrath

Scale in metres. Indicative only. All information contained herein is obtained from sources we believe to be accurate. We cannot guarantee its accuracy. Interested persons should make and rely on their own enquiries.