



### 304/581 Kingsway Miranda NSW

2 2 1

Embracing a prized north aspect, this stylishly appointed apartment pairs wonderfully sunlit interiors with far-reaching panoramic views. It promises unrivalled lifestyle convenience, placed within footsteps of Westfield Miranda and the train station.

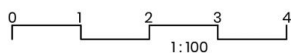
- Elevated level three position in desirable 'Lavita' building
- Spacious open living/dining area flooded with natural light
- Full width balcony enjoys all-day sun and expansive views
- Outlooks stretch as far as the city skyline and Botany Bay
- Modern kitchen has granite benches, European appliances
- Large bedrooms with built-ins, smartly finished bathroom
- Master features shower ensuite and opens out to balcony
- Access to private residents' courtyard with swimming pool
- Air conditioning, intercom entry and lift to secure car

<b>Type</b>	: Unit
<b>Price</b>	: \$ 800,000
<b>Building Size</b>	: 125 sqm
<b>View</b>	: <a href="https://www.greigproperty.com/sale/nsw/sutherland/miranda/residential/unit/7333676">https://www.greigproperty.com/sale/nsw/sutherland/miranda/residential/unit/7333676</a>

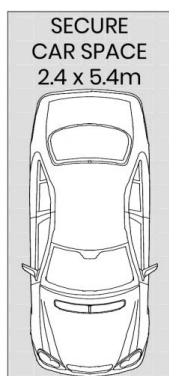


**David Greig**  
0414666559

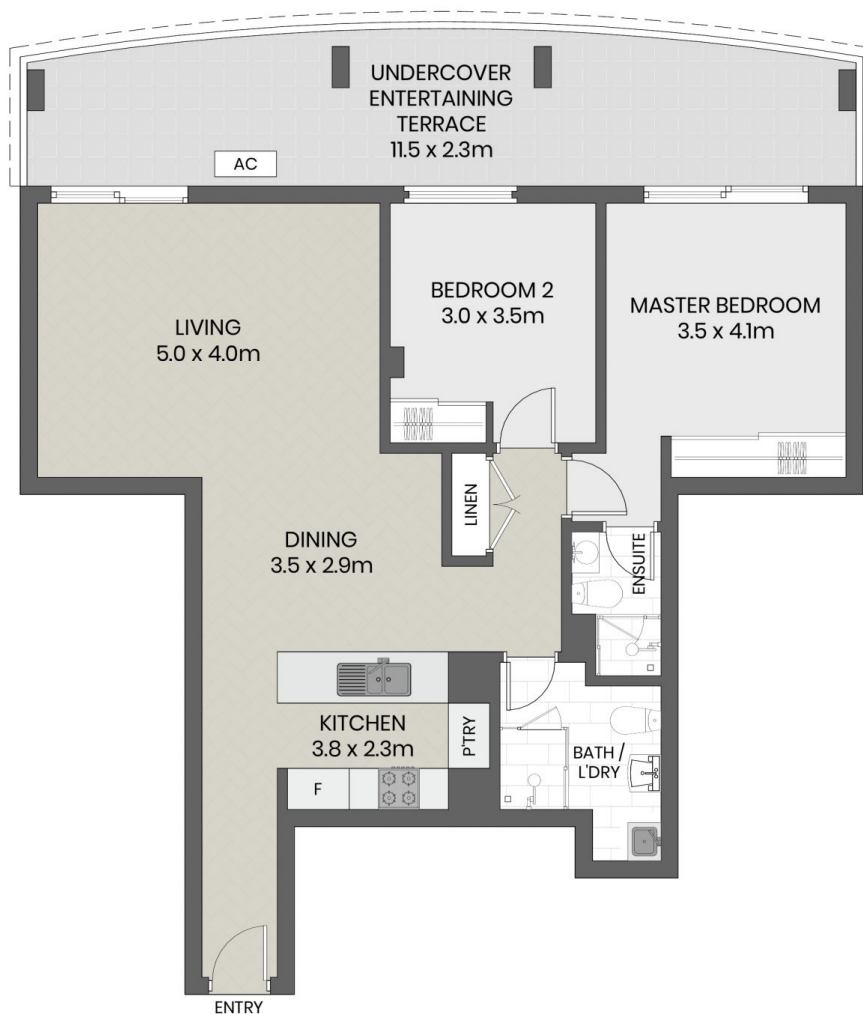
[For full version visit the website](https://www.greigproperty.com)



304/581 Kingsway, Miranda



BASEMENT



LEVEL THREE